

In May of 2010, the HELS mapping website began operation. This report details general user activity, and data reported by Bow Valley Naturalists members and the general public. 22 registered users reported 207 HELS observations of an estimated 678 individual HELS. On average 9 sightings were reported by each individual, with 1 individual reporting 44 sightings. Five users reported 70% of all records (n=144). A few users reported only one (n=4) or two (n=2) sightings each.

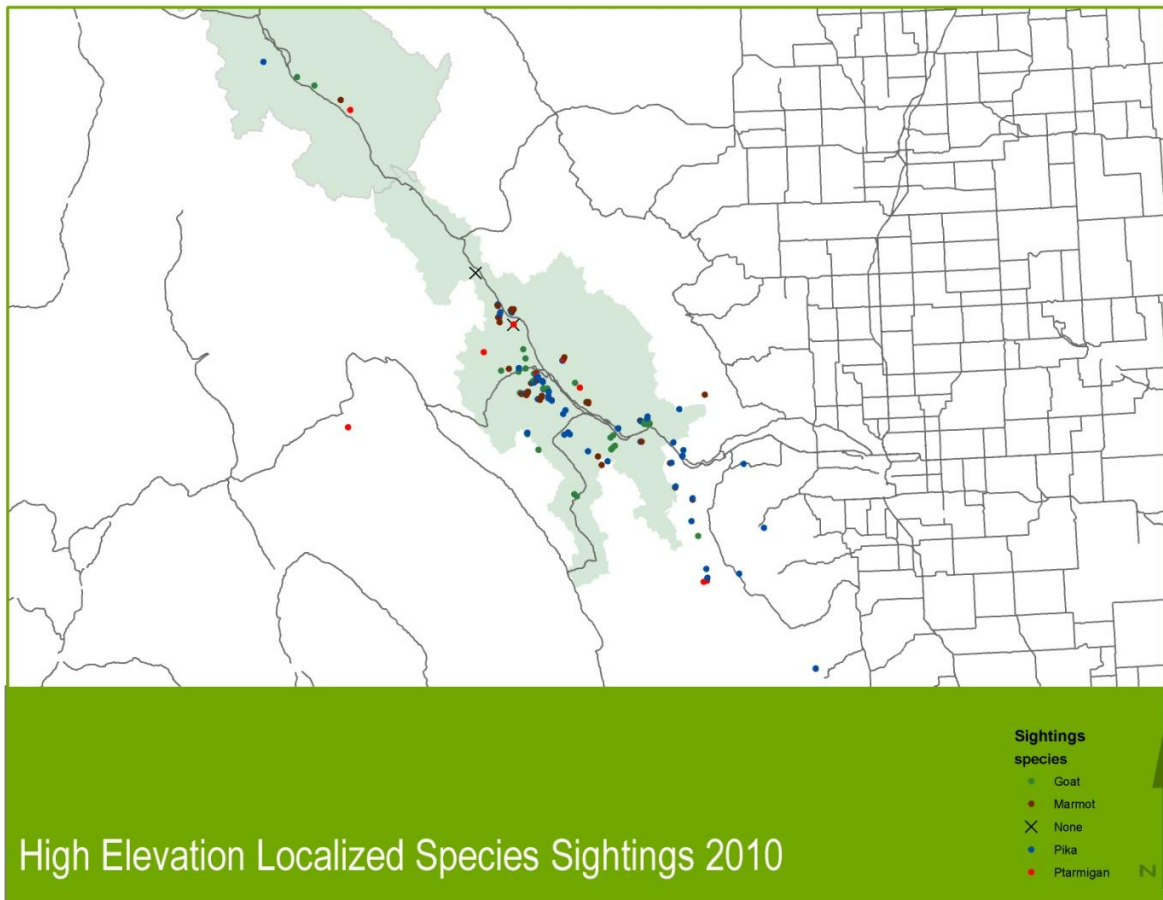


Figure 1. Map of all High Elevation Localized Species reported to Bow Valley Naturalists for 2010.

A total of 131 marmot, 143 pika, 354 mountain goat, and 50 white-tailed ptarmigan were reported and mapped (Table 1). Group sizes differed by species. On average 3 marmots were reported per sighting record, 2 pika, 6 goat, and 4 ptarmigan. Importantly, 3 “none observed” have been recorded (IE someone searched for HELS and did not detect any). The geographic locations of these sightings range from west of Golden (n=1), Jasper (), Yoho (), Banff (), and Kootenae () National Parks. X observations were recorded outside the national parks primarily in the Kannaskis area.

Species	Sighting records	Individuals Reported	Mean Group Size
Goat	58	354	6.10
Marmot	51	131	2.57
None	3	na	na
Pika	82	143	1.74
Ptarmigan	13	50	3.85

Table 1. High Elevation Localized Species reported to Bow Valley Naturalists for 2010.

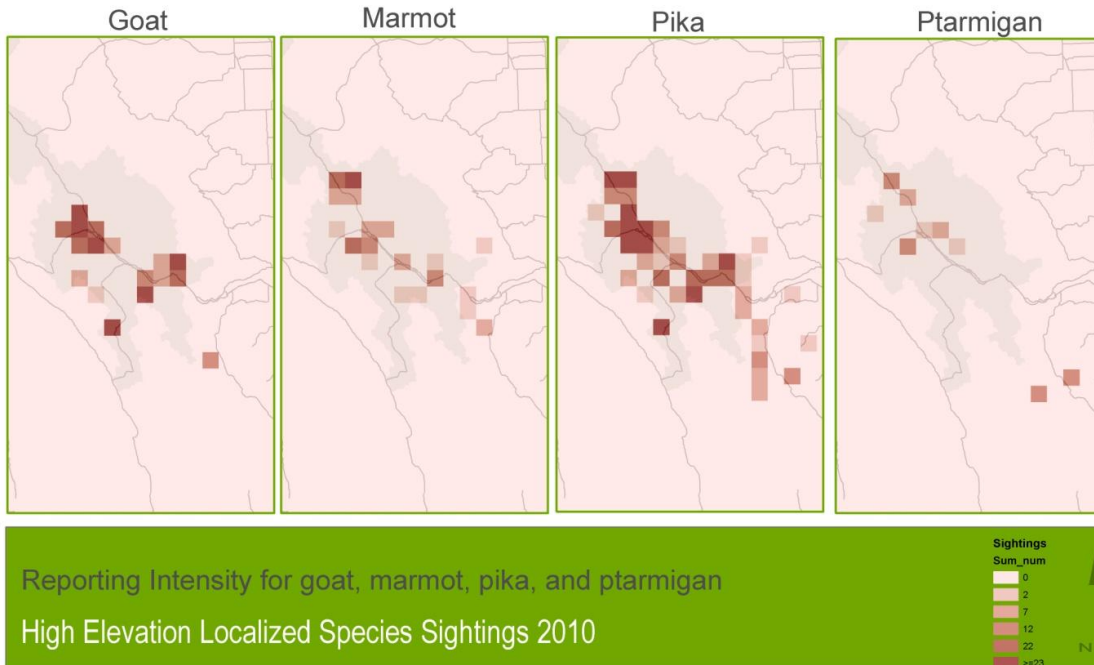


Figure 2. Comparative intensity grid map for goat, marmot, pika, and ptarmigan reported to Bow Valley Naturalists for 2010.

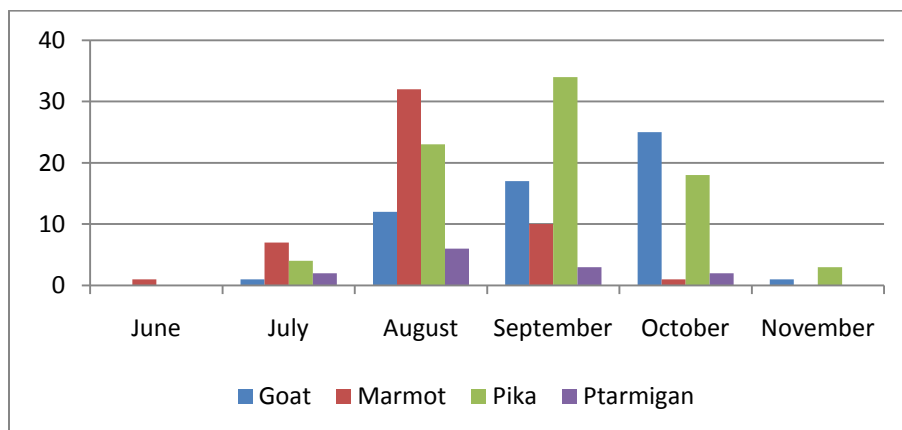


Figure 3. HELS reported for 2010 by Month.